



SANDY SPRINGS
PERFORMING
ARTS CENTER

Technical Packet

Updated: 5/9/25

Table of Contents

| | |
|--|----|
| General Information | 02 |
| Local Map | 03 |
| Local Information | 04 |
| Loading Dock Information | 04 |
| Backstage Policies | 06 |
| Performing Arts Center- Byers Theatre | 09 |
| Performing Arts Center- Studio Theatre | 29 |

General Information

Phone: 770-730-5600

Website: <https://www.sandyspringspac.com/>

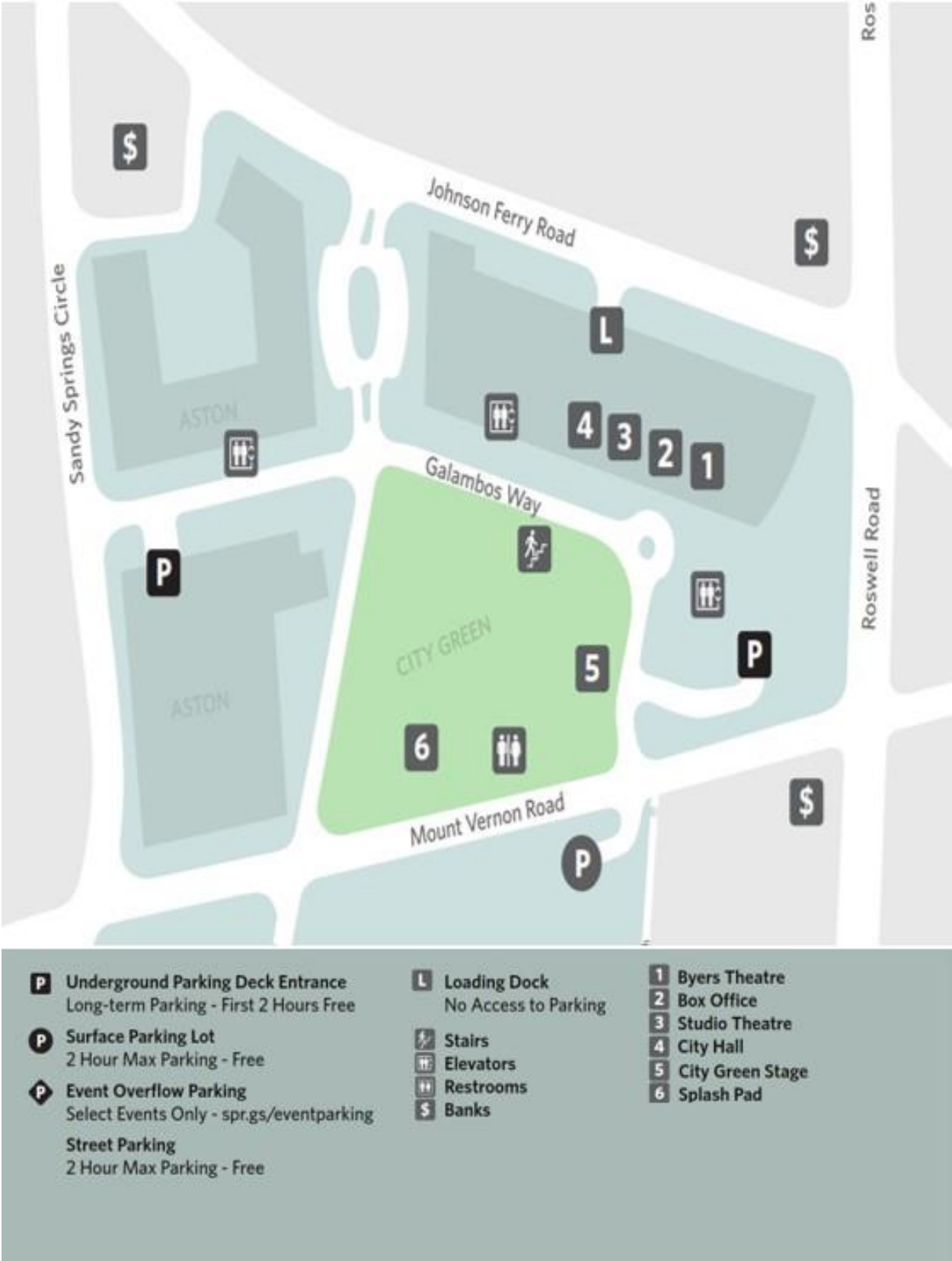
Administrative Hours: Monday-Friday, 9:00am-5:00pm EST.

Box Office Hours: Tuesday - Friday, 12:00 - 5:00 p.m. and 2 hours before curtain on show dates.

Parking: Parking is available with approximately 720 parking spaces in an underground public parking deck. There is also free two (2) hour parking in our surface street spaces and parking deck.

Address: *Sandy Springs Performing Arts and Conference Center- 1 Galambos Way, Sandy Springs, GA, 30328*

Sandy Springs City Hall/Performing Arts Center Map



Local Information

Hotels

| | | | |
|----------------------------------|---------------------|----------------|--------------|
| The Westin Atlanta Perimeter N. | 7 Concourse Pkwy NE | 1.9 Miles Away | 770-395-3900 |
| Hampton Inn Atlanta Perimeter | 769 Hammond Drive | 1.3 Miles Away | 404-303-0014 |
| Sheraton Atlanta Perimeter North | 800 Hammond Drive | 1.3 Miles Away | 404-564-3000 |
| InTown Suites Extended Stay | 355 Hammond Drive | 0.6 Miles Away | 404-531-0067 |
| Aloft Atlanta Perimeter Center | 6401 Barfield Road | 1.5 Miles Away | 470-582-9017 |

Loading Dock Information

Loading Dock Entrance



Deliveries Attention To

SSPAC Loading Dock
"Event Name"
% "SSPAC Event Manager"

Loading Dock Address

225 Johnson Ferry Rd.
Sandy Springs, GA 30328

Deliveries

Deliveries will only be accepted within three (3) to five (5) days prior to the event. Large deliveries require coordination and approval from the SSPAC Event Manager and the Loading Dock Master 30 days before the event date.

Regular Hours

Monday-Friday, 7:00am to 5:00pm.

After Hours

Use of the loading dock after hours must be requested and approved, in writing, 30 days prior to the event.

Shore Power

One (1) 60A NEMA 14-60 or bare wire
Four (4) 15A Edison Outlet
One (1) 100' Extension Cable (upon request)

Company Switch

One (1) 200A w/Isolated Ground (Camlock with reversed neutral and ground)

Dock Dimensions

Loading Dock Exterior Gates: 13.5'W x 14'H
Byers Theatre Stage Doors: 9'W x 10'H
Dock Plate to Dock Gate Depth: 87'
Dock Plate Height: 4'
Short Dock Depth: 50'
Short Dock Width: 21'
Short Dock Height: 2'11"

| | |
|---------------------------------|--|
| | Dock Ramp Width: 3'11" |
| Available Storage Area | Dock Storage Area: 39'10" W x 16'11" D |
| Description | <p>Loading can accommodate two (2) semi-trucks or busses on Saturday and Sunday and one (1) space during regular hours. One (1) additional smaller space (box truck dock) that can accommodate either a 43' bus or single 26' box truck. The dock is shared with City Hall. Street parking is available for additional trucks or busses as needed, but this parking is not directly adjacent to the facility. All trucks or busses must be backed into the dock space. Byers Theatre stage is level with the dock. Studio Theatre and Conference Center are above the dock level and only accessible via elevator.</p> |
| Personal Vehicles | <p>The loading or unloading of personal vehicles must be requested and approved, in writing, 30 days before the event date. Personal vehicles must be moved out of the dock immediately after loading is complete and vehicles may not be left in the loading dock unattended.</p> <p>There is a limit to two (2) personal vehicles at a time. They are to be loaded/unloaded at the box truck dock and must immediately leave to park in an approved area.</p> |
| General Rules | <p>The Sandy Springs Performing Arts Center and Conference Center is a smoke free campus in accordance with Ordinance No. 2014-06-13. There is absolutely zero tolerance for smoking inside the building, to include the Loading Dock and Loading Dock Platforms in accordance with GA Code 31-12A-3 (GA Clean Air Act).</p> <p>No items will be stored/abandoned on or in any areas of the loading dock without the consent of the Loading Dock Master.</p> <p>Any items stored or abandoned longer than twelve (12) hours is subject to removal from the dock or return to the workspace/person.</p> <p>No trucks, vehicles, or trailers will be swept or cleaned out in the loading dock. No equipment will be taken or borrowed from the loading dock without consent, and all items will be returned in a timely fashion.</p> <p>All personal trash (food and drink) is the responsibility of the person it belongs to. Violation of this policy will result in the loading dock becoming a food and drink free area.</p> <p>No doors are to be propped or left open except with the consent of the Security Manager.</p> <p>Idling is not allowed in the loading dock.</p> <p>All vehicles must be backed into the dock space.</p> |
| Street Loading/Unloading | <p>Loading into the facility from the street level must be requested and approved, in writing, 30 days before the event date. If allowed, all loading/unloading must be done from an existing parking space. Double parking is not allowed.</p> |
| Service Elevator | <p>Service elevators are to be used for loading and unloading of any event items. The use of passenger elevators is strictly prohibited and may result in additional fees.</p> <p>Studio Theatre Elevator size: 8'7" D x 4'10" W x 8'H</p> <p>Studio Theatre Elevator Door: 3'11" W x 8'H</p> |

Backstage Policies

Access

- Supervised access to any licensed space is allowed during contracted times. Changes can be made to these times with at least one (1) week notice to the Technical Director or Event Manager. Any additional time worked beyond the contracted amount will result in additional fees.
- The use of other rooms must be approved by the Technical Director or Event Manager. Additional fees may apply.
- The loading dock and lobbies are considered common areas for all events and operations. No other use is allowed, except as authorized in writing by the Licensor.
- All minors must be always under adult supervision.
- All contracted time between the hours of midnight and 8:00am will be subject to rates equal to time and one half.

Smoking

- The Sandy Springs Performing Arts Center and Conference Center is a smoke free campus.

Use of Animals during Performances

- The use of animals of any kind during performances is strictly prohibited unless approved by the Technical Director or Event Manager. If approved, the animal must be kept in mutually agreed upon areas only. All animals must be leashed, caged, or otherwise always restrained when not performing and an approved handler must be always within twenty feet (20') and within sight of the animal, particularly when the animal is on stage. A certificate of health, signed by a licensed veterinarian, must be provided for each animal before the animal will be allowed to enter the facility.

Facility Conditions

- All facilities must be restored to their original condition with all food, drink, personal items, and surface trash removed or placed in trash receptacles.

Housekeeping

- For events at the Sandy Springs Performing Arts, standard facility cleaning will occur nightly after the performance or the next morning during standard office hours, as scheduled by Arts Center staff. Special cleaning arrangements can be made for additional charges. Any additional cleaning must take place as scheduled. Schedules with less than a two (2) hour window will not be accepted. Excessive trash left by any User will result in additional cleaning fees.

Decorations

- The following decorations are specifically prohibited confetti (static and cannons), glitter, stickers, spray paint, paint, burning objects/candles, helium balloons, rice, streamers, or poppers.
- All decorations and equipment must be delivered and set up on the same day as the event, and removed at the conclusion of the event unless other arrangements are pre-made with the Production or Event Manager.
- All vendors' pickups and deliveries of goods must be coordinated through the Technical Director or Event Manager.
- Nothing may be nailed, tacked, taped, hung, stapled, or affixed in any way to the facility, inside or out. All decorations, other than free standing, must be approved by the Production or Event Manager.

Signage

- In the Byers and Studio Theatre, temporary call boards may be added to the backstage hallway in approved locations only. Any additional posting of materials must be approved by the Technical Director or Event Manager and can only be posted using approved methods.
- In all rentable spaces, no items may be attached to the walls, ceilings, floors, or lighting fixtures without explicit permission.

Food and Drink

- The Arts Center is the sole provider for all catering needs. Any outside food or catering must follow the Catering Policy. Please refer to the Event Catering Policy received during event contracting.
- Food and drinks sold at the concession's stands are allowed in the seating areas, but not permitted near any equipment. Any damage resulting from food or drink spillage will result in additional fees.
- No outside alcoholic beverages are allowed, and the Venue will be the exclusive provider of such requests.

Lobby Setup

- There is space for the User to provide additional items (merchandise tables, photo opportunities, etc.) but any changes to the standard layout must be requested during the contracting process or production advance. Any changes, if approved, will result in additional fees.

Backstage Setup

- Space for storage on the loading dock will be provided. Working outside the provided space will result in additional fees.
- Backstage furniture may not be moved. Any changes to the standard layout must be requested during the contracting process or production advance. Any changes, if approved, will result in additional fees.
- Stairwells must be kept clear and may not be used as dressing rooms, quick-change rooms, or any other use other than its intended purpose.
- The laundry room may not be used for anything other than its intended purpose.

House Staff

- Arts Center staff is provided a full one-hour break after five (5) hours of work. User will not be charged labor hours for this break. To ensure all parties have appropriate breaks, all production scheduling must be approved by the Technical Director during the production advance.

Security Requirements.

- For all Ticketed events, The Arts Center staff will arrange and provide for bag checks and one (1) on site security personnel. Additional security, including use of metal detectors and wand services can be provided for additional charges. Arts Center staff reserves the right to require additional security for events that are deemed necessary.

Use of Equipment

- Equipment listed within the Technical Specifications Packet is generally available for use but is not guaranteed until the production advance. The use of advanced items (such as moving light fixtures) will require additional fees.
- The User may not use any equipment without prior written consent. Any equipment provided outside of the production advance may require additional staffing and may result in additional fees.
- Misuse, abuse, damage, or loss of theatrical equipment will result in additional fees.
- Equipment inventory is limited and shared between multiple, on-site events.

Use of Pianos

- Pianos listed within the Technical Specifications Packet are generally available for use, but it is not guaranteed until the production advance. The use of the pianos will require a usage, moving, and tuning fee.
- All maintenance and tuning work will be done by the Venues Preferred Piano Technicians. No others may work on the pianos.

Special Effects

- Special effects include any device or effect that is brought onto the premises which, if not properly controlled, may present a hazard. Examples include the use of dry ice machines, smoke machines, fog generators, pyrotechnics and fireworks, live flame, firearms, motors of any kind (including vehicles), strobe

lighting and lasers. All stage effects for a production must be presented to the Technical Director so they can be evaluated for safety and possible permit needs.

- Warning notices must be displayed for patrons stating the type of special effect and that it will be used within the performance.

Stage Weapons

- Any firearms, swords or any other weapon used within an event must be replicas designed for stage use and comply with the Arts Center's Safe Handling of Stage Weapons Policy.

Specialized Rigging

- Any activities/effects that require the lifting, elevation, flying, and/or falling [from heights] of performers on stage must be executed/performed by a certified, third-party rigging company bearing appropriate insurance. Third-party contraction is the responsibility of the visiting company/renter and is subject to venue approval. Said activities/effects must be disclosed (with supporting documentation, if applicable) in writing, in advance, and is subject to venue approval. All other rigging will be controlled by the venue and may require additional labor/costs as deemed necessary and/or appropriate to ensure the safety of performers, crew, and patrons alike.

Painting and Scenery Construction

- Light touch up and scenic painting are allowed on stage. However, any affected area must be returned to its original condition prior to load out. Any spray, aerosol, spatter, or compressed air techniques are prohibited.
- Brush and paint cleanup is only allowed in designated areas and must be restored to its original condition.
- In the Studio Theatre, Scenery construction is limited to general assembly.
- Rosin, glitter, pervasive chemical effects, and any other material that is damaging to a person's health or the facility (as determined by the production team) or is extremely challenging to clean is not allowed.

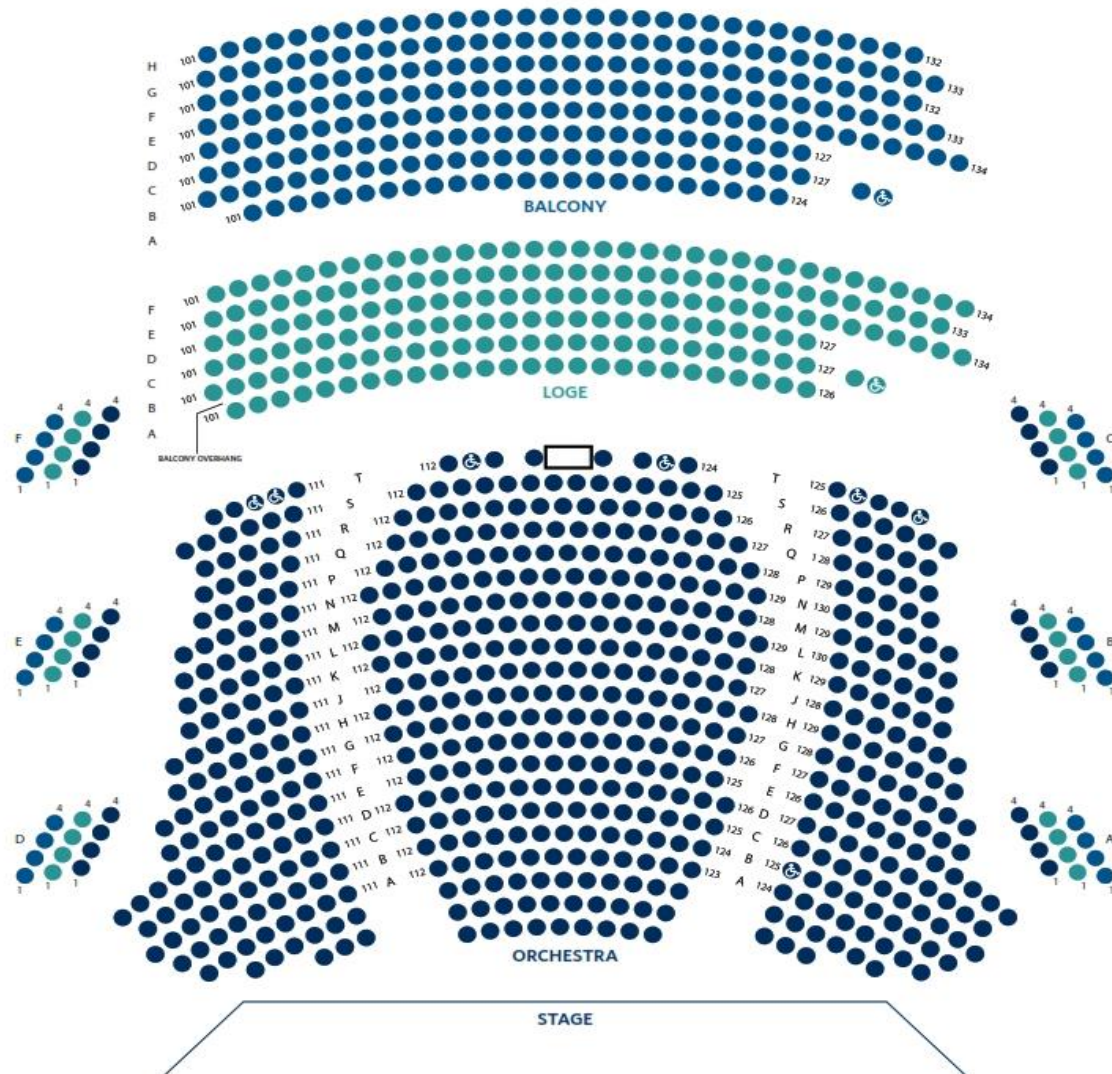
Safety

- All scenery must conform to industry-standard construction techniques and safety features.
- Any element that is deemed unsafe by the Technical Director will be eliminated or adapted to ensure a safe experience for all parties.
- All scenery must be treated with a fire retardant. Highly flammable materials will not be allowed without proper fire-retardant documentation.
- All tools and equipment must be secured properly and be fitted with approved safety ties for overhead use.
- All personnel, volunteers, staff, and anyone else involved with the event are required to comply with OSHA standards and regulations.
- In the Byers Theatre, access to the catwalk is limited to the Arts Center staff. All others must be approved by the Technical Director.
- In the Byers Theatre, crossing from the stage to the house must be done via the stairs located on either side of the stage-house or temporary stairs provided by Arts Center production staff. Jumping on or off the stage or stepping over the wooden rails is not allowed.

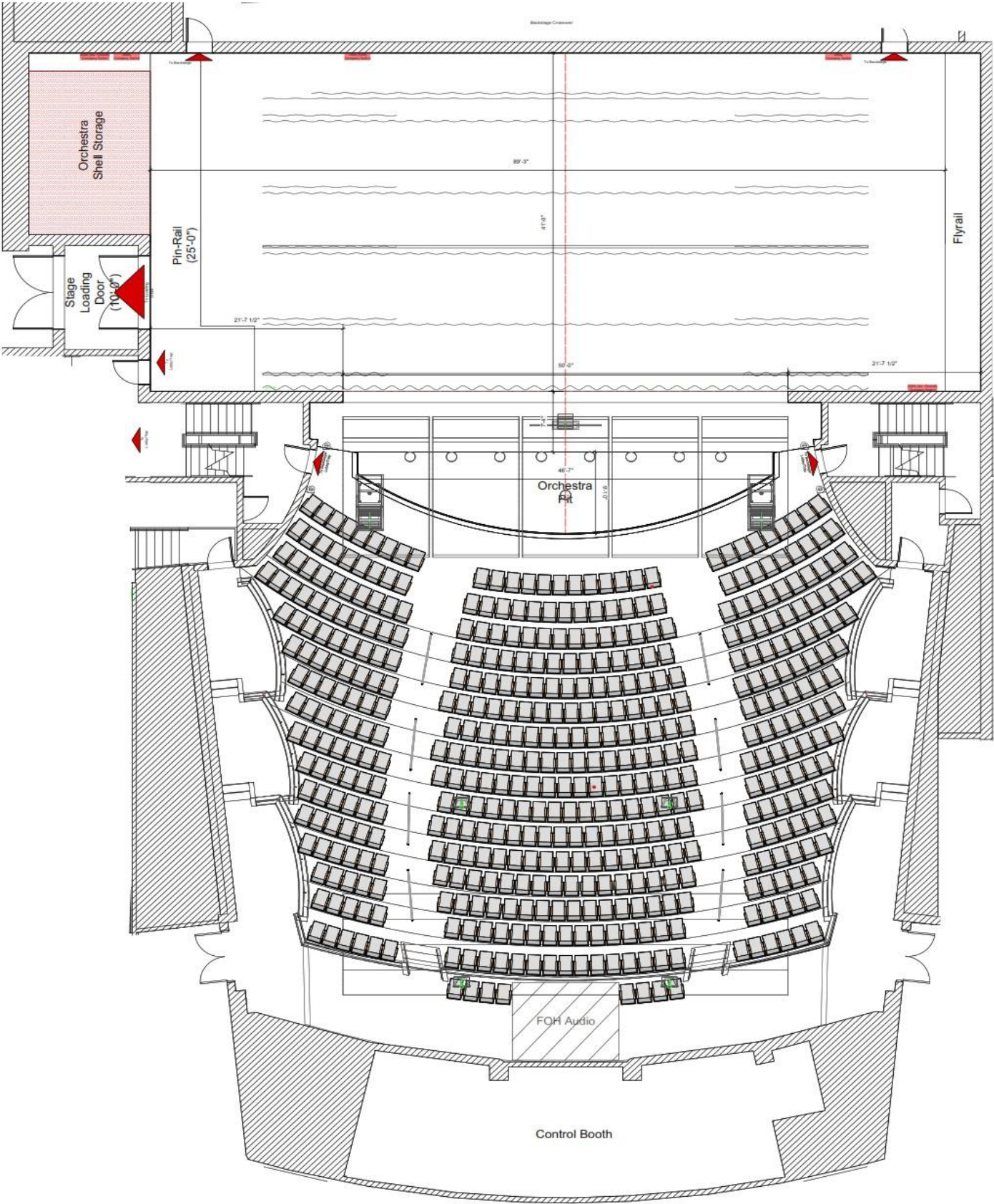
Byers Theatre

Seating guide with Pit Seats

| | |
|-----------------|-------|
| Orchestra Pit | 38 |
| Orchestra Fixed | 530 |
| Orchestra Boxes | 30 |
| Loge Fixed | 183 |
| Loge Boxes | 30 |
| Balcony Fixed | 244 |
| Balcony Boxes | 10 |
| Total | 1,065 |



Byers Theatre Stage and House



Sandy Springs Performing Arts Center - Byers Theatre

Seating and House Capacity:

- Orchestra Pit: 36 seats
Orchestra Level: 560 seats
Lobby Level: 213 seats.
Balcony Level: 254 seats
Total: 1065 seats

Stage Dimensions

- Overall Stage dimension: 41'-0" D x 89'-2" W
- Proscenium opening: 50'-0" W x 28'-0" H
- Plaster Line to upstage wall (Depth): 41'-0"
- Plaster Line to last line set: 39'-0"
- Plaster Line to apron edge (pit extend): 17'-2"
- Center Line to stage left fly rail: 42'-7"
- Center Line to stage right wall: 46'-7"
- Stage left wing (from pros. opening): 17'-7"
- Stage right wing (from pros. opening): 21'-7"
- Grid height: 62'-0"
- Exterior Loading Dock Doors: 30' W x 14' H
- Interior Loading Dock Doors: 9'-0" W x 10'-0" H

Stage Deck

- Sprung, 1/4" tempered hardboard black painted surface.
- Two (2) layers of 5/8" plywood.
- Robbins Bio-Channel Classic sleepers with integral stop blocks (18" centers).

Orchestra Pit

- Mechanized pit lift.
 - Gala Spiralift mechanism.
- The pit is 9'-10" deep x 46'-7" wide at pit level.
- The pit is 15'-10" deep x 44'-7" wide at orchestra level.

SSPAC Byers Lineset Schedule

ALL ITEMS MARKED IN RED ARE NOT MOVABLE

| Line Set # | Item Hung | Dist. from Plaster Line | Gross Weight (above pipe) | Notes: |
|------------|---------------------------|-------------------------|---------------------------|-------------------|
| 01 | Valance | 9.5" | 220 | |
| 02 | | 1' 5.5" | | |
| 03 | Grand Drape | 2' 1.5" | 880 | |
| 04 | Projection Screen | 2' 9.5" | 280 | |
| 05 | | 3' 5.5" | | |
| 06 | 1st Electric (Blinders) | 4' 1.5" | 120 | DMX/Power from SL |
| 07 | | 4' 9.5" | | |
| 08 | 2nd Electric | 5' 5.5" | 620 | DMX/Power from SL |
| 09 | Orchestra Shell | 6' 9.5" | N/A | |
| 10 | Border #1 | 8' 1.5" | 80 | |
| 11 | Legs #1 | 8' 9.5" | 80 | |
| 12 | | 9' 5.5" | | |
| 13 | | 10' 1.5" | | |
| 14 | Stage Monitors | 10' 9.5" | 40 | |
| 15 | | 11' 5.5" | | |
| 16 | | 12' 1.5" | | |
| 17 | 3rd Electric | 13' 5.5" | 620 | DMX/Power from SR |
| 18 | | 14' 1.5" | | |
| 19 | | 14' 9.5" | | |
| 20 | | 15' 5.5" | | |
| 21 | | 16' 1.5" | | |
| 22 | Border #2 | 16' 9.5" | 80 | |
| 23 | Traveler | 17' 5.5" | 480 | |
| 24 | Orchestra Shell | 18' 9.5" | N/A | |
| 25 | 4th Electric | 20' 9.5" | 620 | DMX/Power from SR |
| 26 | | 22' 1.5" | | |
| 27 | Stage Monitors | 22' 9.5" | 40 | |
| 28 | | 23' 5.5" | | |
| 29 | Border #3 | 24' 1.5" | 80 | |
| 30 | Legs #2 | 24' 9.5" | 80 | |
| 31 | | 25' 5.5" | | |
| 32 | | 26' 1.5" | | |
| 33 | 5th Electric | 27' 5.5" | 260 | DMX/Power from SR |
| 34 | | 28' 1.5" | | |
| 35 | | 28' 9.5" | | |
| 36 | | 29' 5.5" | | |
| 37 | Orchestra Shell | 30' 9.5" | N/A | |
| 38 | Border #4 | 32' 9.5" | 80 | |
| 39 | Legs #3 | 33' 5.5" | 80 | |
| 40 | | 34' 9.5" | | |
| 41 | Black Scrim | 35' 5.5" | 60 | |
| 42 | Cyclorama | 36' 1.5" | 140 | |
| 43 | | 36' 9.5" | | |
| 44 | 6th Electric (Cyc Lights) | 37' 5.5" | 320 | DMX/Power from SR |
| 45 | | 38' 1.5" | | |
| 46 | Blackout | 38' 9.5" | 360 | |

Drapery Schedule

- Main Border: 68'-0" W x 10'-0" H - Custom color IFR Prestige velour at 75% fullness.
- Main Drapery: Bipart; panels are 35'-6" W x 28'-0" H - Custom IFR Prestige velour at 75% fullness.
- Borders: 2 @ 68'-0" W x 10'-0" H - Black IFR 25oz Charisma velour sewn flat.
- Borders: 2 @ 68'-0" W x 8'-0" H - Black IFR 25oz Charisma velour sewn flat.
- Legs: 6 (3 sets) @ 15'-0" W x 28'-0" H - Black IFR 25oz Charisma velour sewn flat.
- Traveler: Bipart; panels are 35'-6" W x 28'-0" H - Black IFR 25oz Charisma velour sewn flat.
- Cyclorama: 57'-0" W x 28'-0" H - White Leno.
- Scrim: 68'-0" W x 28'-0" H - Black Sharktooth.
- Black Out: 34'-0" W x 28'-0" H - Black Poly Velour

Fly System

- 46 single purchase counterweight line sets with 68' long battens, with removable 4' batten extensions.
 - All battens are 2" Schedule 40 pipe.
- Lineset capacity is 2,088 lbs. each.
- Base Pipe Weight (Noted in Yellow): 110 lbs
- 40 Pipe Extensions with eyes are available.
 - Can only be used Up Stage of Lineset 11.
- The following are dedicated line sets that cannot be stripped or moved:
 - Three (3) linesets motorized counterweight assist dedicated to the orchestra shell ceiling.
 - One (1) dedicated lineset for the projection screen.
 - One (1) dedicated lineset for the main drape.
- Fly rail is located stage left.
- Mid-loading bridge, loading bridge, and grid accessible via stairs stage left.
- Mid-bridge and grid accessible via stairs stage right.

Weight

- 50,000 lbs total weight.
 - 20 lb and 30 lb bricks.
- Weight primarily located on the mid-bridge and loading bridge.

Pin Rail

- Located on the stage left fly rail, stage left mid-bridge, and stage right mid-bridge.
- House does not supply rope for pin rails.

House Mounting Points

- Twelve (12) 10' pipes in the house.
- Six (6) total HL and six (6) HR (one mounted under each box).
- One Balcony rail at Loge height, running the full length of the balcony.
- Each mounting point has access to lighting power and an ETC net port.
- Load capacity of all house pipes is 30 lbs per linear foot.
 - 250 lb max point load.

Transformer-Isolated Power *(Camlock with a reversed neutral and ground or bare-wire).*

- Down Stage Left:
 - One (1) 200A
 - Two (2) 20A Edison Outlets
- Up Stage Right:
 - One (1) 200A
 - One (1) 20A Edison Outlet
- Down Stage Right:
 - Two (2) 20A Edison Outlet
- Up Stage Left:
 - One (1) 20A Edison Outlet

Company Switch *(Camlock with a reversed neutral and ground or bare wire).*

- Up Stage Right: One (1) 400A
- Up Stage Left: One (1) 200A.
- Grid Level: One (1) 100A

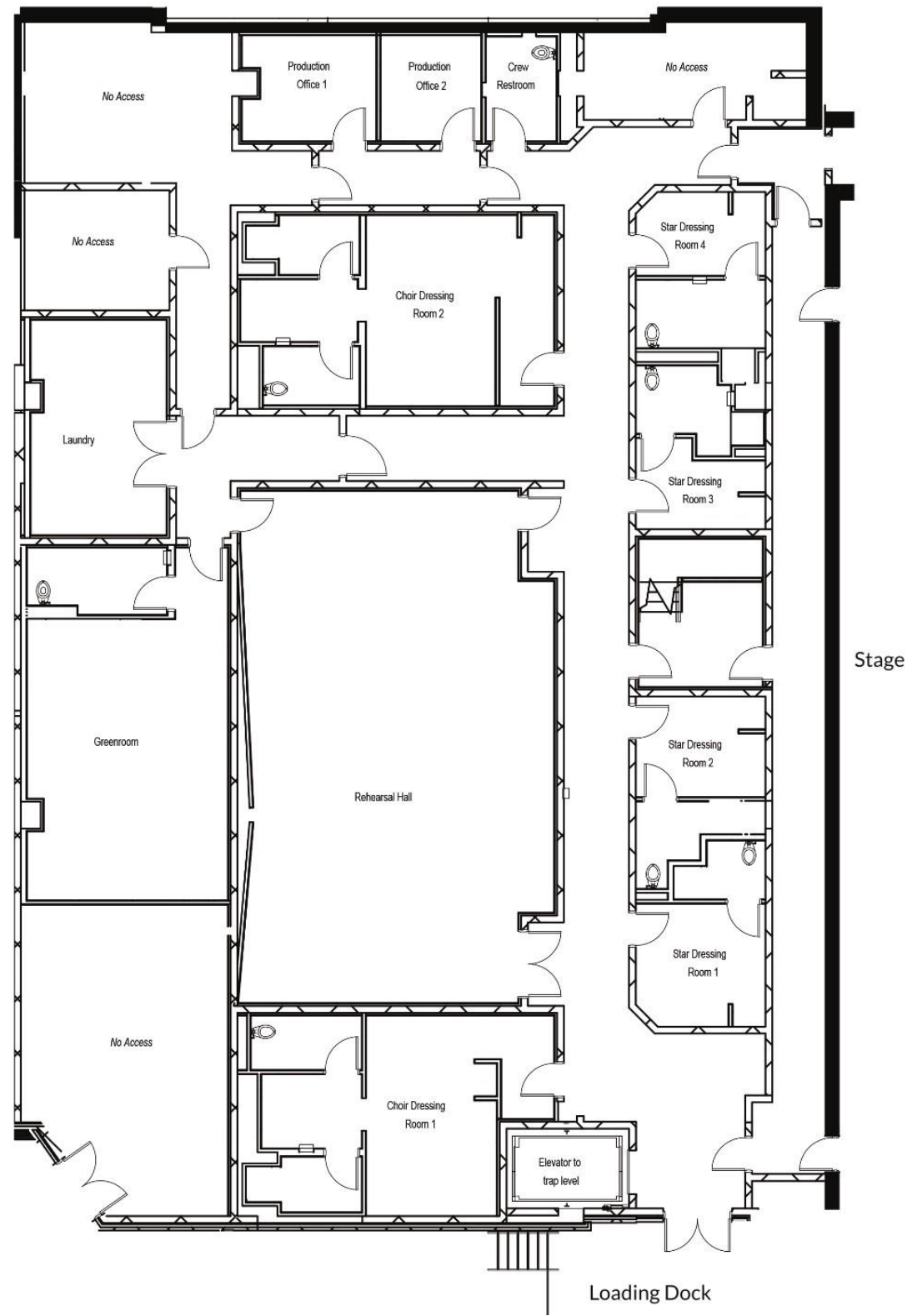
Stage Management

- Stage Manager's Console includes Intercom, Stage Video Feed and Announcement Microphone with Crestron selectable feeds to Backstage, Greenroom, House, and Lobby.
- Can be located at either: SL, SR, Booth, or Center Orchestra (placed on tech table)

Stage Door

- The stage door is located at the front of the arts center between the Box Office and Studio Theatre Lobby. This door remains locked and can only be accessed upon request during scheduled and approved times with a code sent by the arts center.
- The arts center does not staff this door. Early arrivals will need to wait for the scheduled access times. Anyone entering the backstage area is the responsibility of the visiting company. Security at the stage door can be staffed by request (labor charges will apply) or be provided by the visiting company.

Byers Theatre Backstage



Backstage Areas

Dressing Rooms

- All support spaces are located at stage level behind stage.
- All dressing rooms have dedicated bathrooms and showers.

| | | |
|----------|--------------------------|----|
| Private: | Dressing Room A: | 4 |
| | Dressing Room B: | 3 |
| | Dressing Room C: | 1 |
| | Dressing Room D: | 4 |
| Chorus: | Stage Left Chorus Room: | 13 |
| | Stage Right Chorus Room: | 13 |

Green Room

- Green room with a small kitchenette is located off the dressing room corridor backstage.
 - Capacity of 25 people.

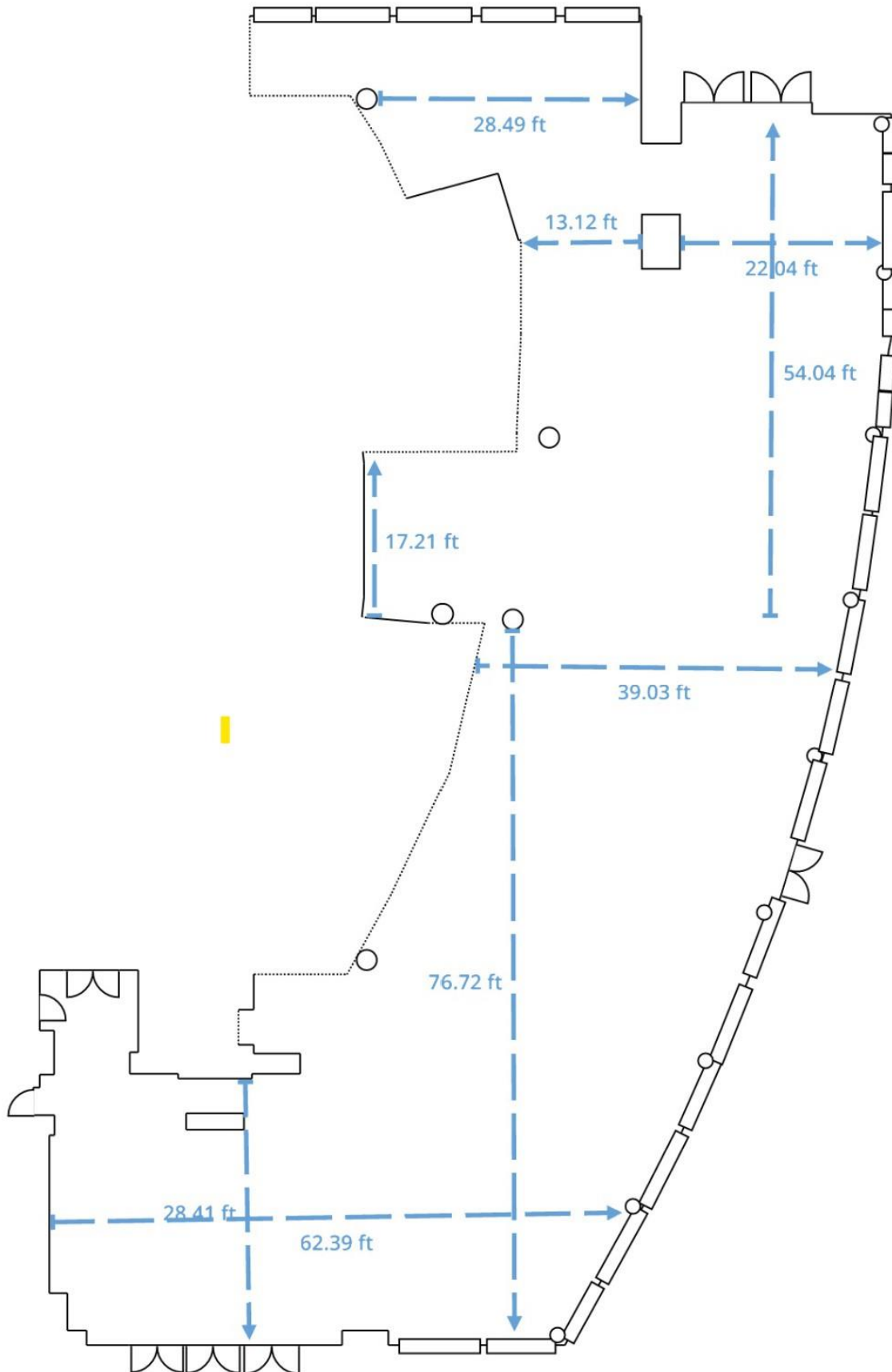
Rehearsal Room

- 1,400 sq. ft. rehearsal or staging room located immediately behind stage.
 - Capacity of 60 people.

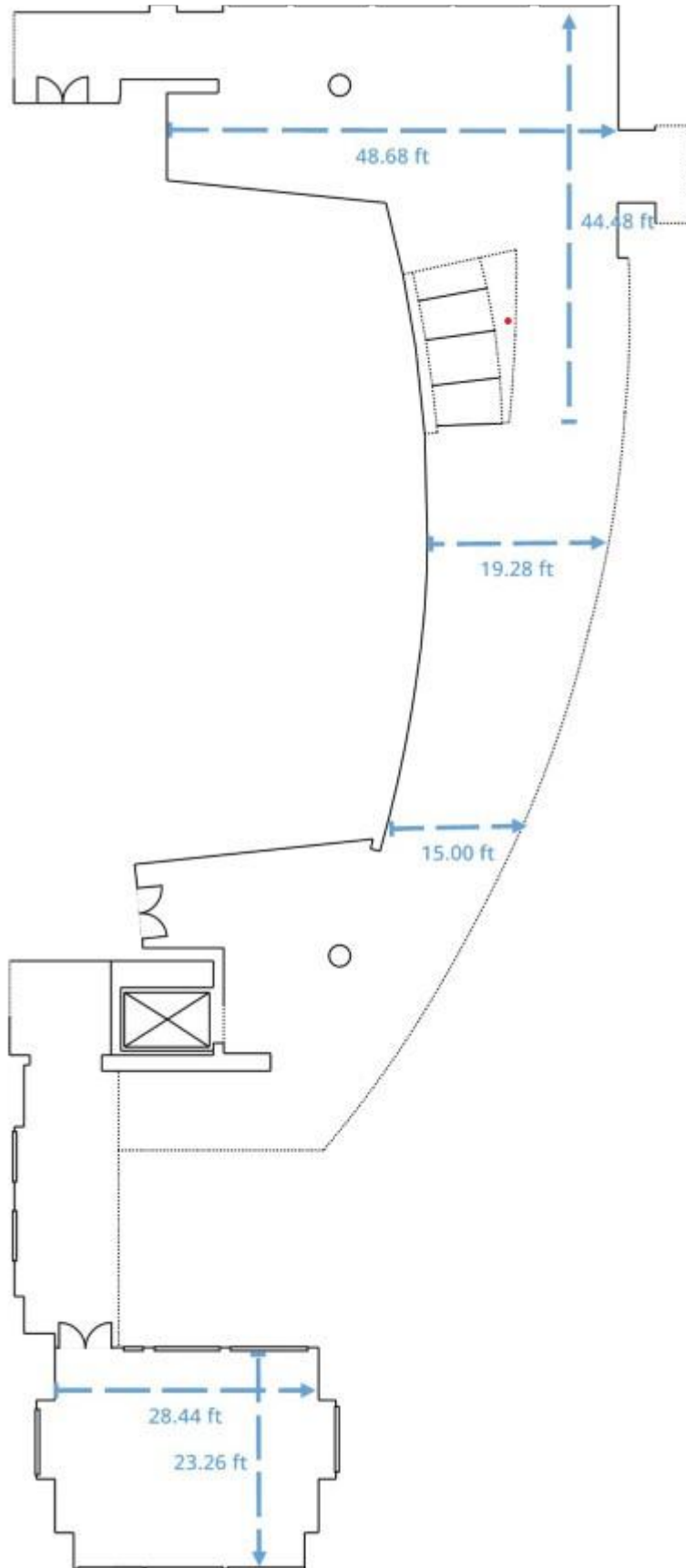
Laundry Room

- Laundry room is available backstage.
 - One (1) industrial washing machine
 - Two (2) industrial dryers
- Visiting Companies are responsible for providing their own laundry detergent.
 - Washer requires “HE” *liquid* detergent.

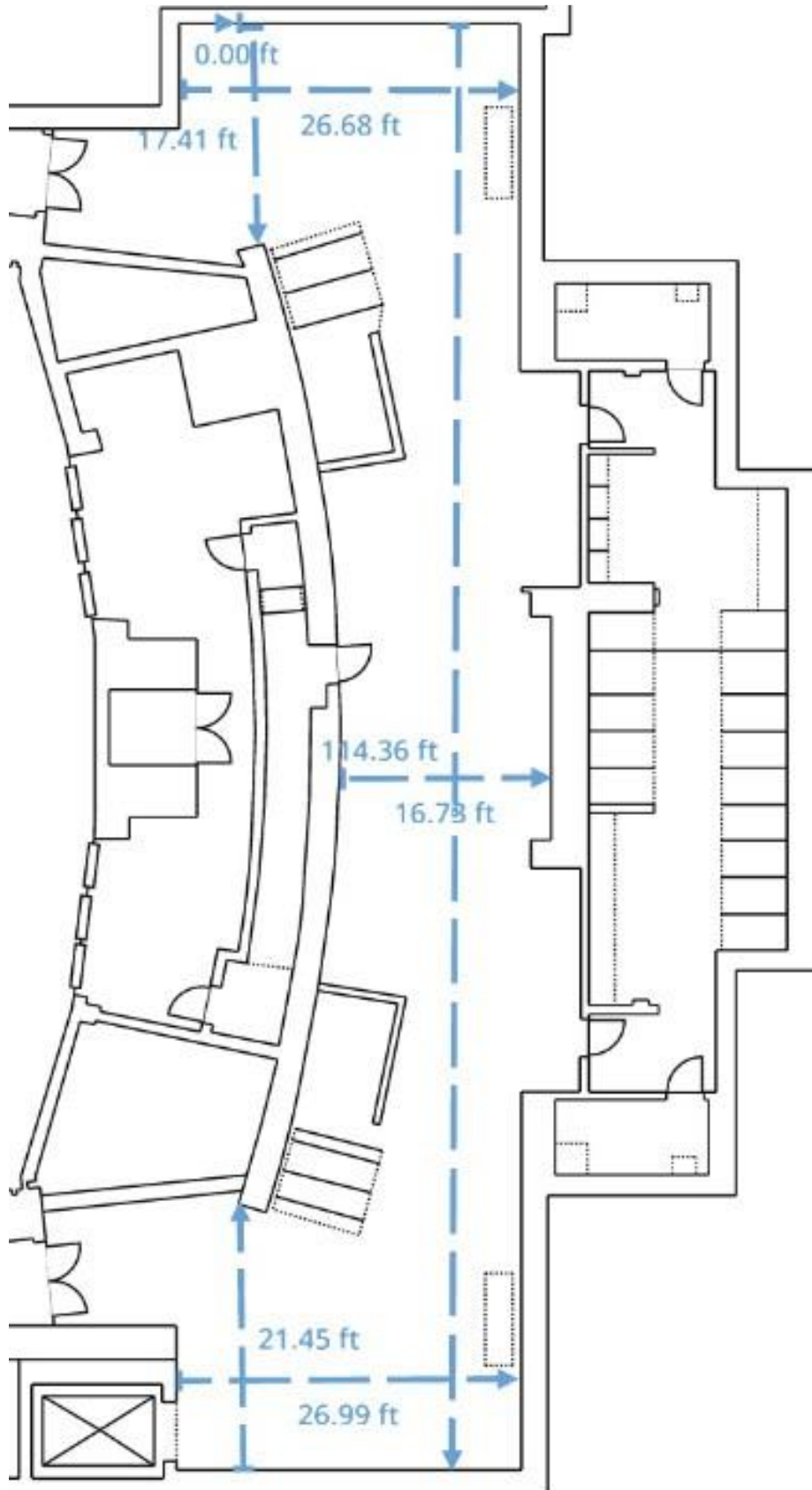
Byers Lobby - Lobby Level



Byers Lobby - Balcony Level



Byers Lobby - House Level



Byers Theatre Audio

Mix Position

- Front of House mix position is located at center in the back row (Row T) of the orchestra level. Mix position is 72' from the proscenium line.
- Two (2) 20-Amp circuits are available at this position.

House Patches

- Cable patches are located throughout the building.
 - XLR, W1, SDI, CAT5e, CAT6a, FIBER, and COM
- All cable patches lead to the booth where the master patch panel is located.
- Please contact the house audio engineer for more information regarding these patches.

Snake Runs

- Two (2) 5" conduits are pre-run from the FOH mix position.
- One of these conduits is run to the stage left side of the pit and the second conduit is run to the stage right side of the pit. From there the snake/cable can be run onto the stage either the downstage left or downstage right.
- Approximately 150' of snake is required for this run.

Consoles

- Two (2) Digico SD10+ Digital Audio Consoles.
 - One (1) for FOH
 - One (1) for Monitors/Backup

Input/Output

All Inputs and Outputs can be patched to various locations throughout the venue.

- One (1) Digico SD-Rack configured with 48 analog inputs and 48 analog outputs.
- One (1) Digico SD-Rack configured with 56 analog inputs and 24 analog outputs.
- One (1) Dante 8x8 Card

Speakers and Personal Listening

Unless listed as removable, all speakers are permanent and cannot be removed or adjusted.

- Twenty-four (24) L-Acoustics KARA i-2 Line Array Cabinet (Hung 12L, 12R)
- Eight (8) L-Acoustics SB18 i-2 Subwoofer Cabinet (Hung 4L, 4R in cardioid array)
- Four (4) L-Acoustics SB28-2 Dual Subwoofer Cabinet (Placed 2L, 2R on stage deck, Removable)
- Four (4) L-Acoustics KIVA ii Line Array Cabinet – Center Fill (Hung Center)
- Four (4) L-Acoustics X8 Side/Out Fill Speaker (Hung 2L, 2R)
- Four (4) L-Acoustics X8 Delay Speaker (Box Seat Delays)
- Four (4) L-Acoustics X8 Front Fill Speaker (Placed across front lip of stage, Removable)
- Eleven (11) L-Acoustics X4i Front Fill Speaker (Placed across front lip of stage, Removable)
- Two (2) L-Acoustics X8 Monitor Speaker (Hung on lineset 14 as upstage monitors, Removable)
- Twenty (20) Listen LR-5200 Personal Listening Receiver

Auxiliary Amps

All Auxiliary Amp channels can be patched to various locations throughout the venue.

- Four (4) L-Acoustics LA4X quad channel amps

Backstage Monitors

- Backstage hallway, greenroom, rehearsal hall, laundry room, production offices, and dressing rooms
 - In ceiling speakers with independent volume control
- Speakers can be fed with the flow stage-mic or Left/Right feed from the audio console.
- Paging mic from stage-manager console is also routed to these speakers.

Cinema Surround Processor

- One (1) Dolby CP750 Digital Cinema Processor (7.1 Total Channels)
- *NOTE: Byers Theatre is equipped with NL2 patches throughout the house for surround speakers, however, the venue does not own surround speakers.*

Wireless Microphones

- Four (4) Sennheiser EM6000 Dual-channel wireless receiver
- Eight (8) Sennheiser SKM6000 Handheld wireless transmitter (with Sennheiser 935 Capsules)
- Eight (8) Sennheiser SK-6000 Bodypack wireless transmitter
- Four (4) Sennheiser HSP 4-3 Headset Microphone (Beige) for Bodypack

Communication

*The Byers Theatre is equipped with a Clearcom Helixnet digital **wired** intercom system. If you wish to integrate a wireless intercom system, our system can support up to 2 channels of 4-wire.*

- Three (3) Clearcom HKB-2X Quad-Channel Mobile Speaker Station
- Twelve (12) Clearcom HKP-2X Dual-Channel Bodypack
- Four (4) Clearcom HS-6 Telephone Handset
- Twelve (12) Clearcom CC-300-X4 Single-Muff Headset
- Ten (10) CC-400-X4 Double-Muff Headset

All below equipment is shared across the venue and may not be available. Please contact the house audio engineer for availability.

Wired Microphones

- Four (4) AKG C414B/XLS Large Diaphragm Condenser Microphone
- Two (2) AKG C451B Small Diaphragm Condenser Microphone
- Four (4) AKG C535EB Condenser Microphone
- Four (4) Crown PCC160 Boundary Microphone
- One (1) Earthworks PM40 Piano Microphone System
- Two (2) EV RE20 Large Diaphragm Dynamic Microphone
- Two (2) pairs Neumann KM184 Small Diaphragm Condenser Microphone
- Two (2) Neumann TLM-103 Large Diaphragm Condenser Microphone
- Two (2) Royer R-121 Dynamic Ribbon Microphone
- Six (6) Sennheiser E604 Dynamic Clip-on Microphone
- Four (4) Sennheiser E609 Large Diaphragm Dynamic Microphone
- Four (4) Sennheiser MD-421-II Dynamic Microphone
- Two (2) Shure Beta 52 Dynamic Microphone
- Six (6) Shure Beta 58A Dynamic Microphone

- Two (2) Shure SM58/S Dynamic Microphone with Switch
- Six (6) Shure Beta 98AD/C Clip-on Dynamic Microphone
- Eight (8) Shure SM57 Dynamic Microphone
- Four (4) Shure SM81 Small Diaphragm Dynamic Microphone
- Seven (7) Shure MX418D/S Gooseneck Podium Microphone
- One (1) Shure 91A
- Six (6) Shure MX202B/S
- Two (2) Shure WB98H/C
- Three (3) SM58/S

Stands

- Forty (40) AKG KM210/9 Tripod Boom Stand
- Thirty (30) AKG KM259 Short Tripod Boom Stand
- Ten (10) Atlas Sound DS-7 8" Desk Stand
- Ten (10) Atlas Sound DS-2 4" Desk Stand

Direct Boxes and Interfaces

- Six (6) Countryman Type 85 Active Direct Box
- Six (6) Radial JDI Passive Direct Box
- Four (4) Radial PRO-AV2 Stereo Direct Box
- Two (2) Focusrite Scarlett 6i6 USB Interface

Playback

- One (1) MacBook Pro with QLab 4 (Full license)
- One (1) MacBook Pro with QLab 4 (Audio license)

Additional Monitors

- Twenty-Two (22) L-Acoustics X12 Passive Floor Monitor Wedge
- Six (6) L-Acoustics 112P Active Floor Monitor Wedge
- Two (2) L-Acoustics SB15P Active Subwoofer

Byers Theatre Lighting

Dimmers

- Two (2) ETC Sensor 3 x 96 racks
 - 192 dimmers (*ETC ThruPower modules*).

Console

- Master Console (Booth): ETC GIO (24,576 output)
 - Two (2) 21" external Touchscreens
 - One (1) 27" External Monitor
- Roving Console (Stage): ETC Puck
 - One (1) 21" External Touchscreen

House Lights

- Controlled through ETC Paradigm with integrated HTP (Highest Takes Priority) control with lighting console.
- All house lights are LED and permanently hung/mounted in the venue.

House Spotlights

- Three (3) Robert Juliat Super Corrigan 1200w

Rep Plot

FOH-

- Six (6) High End Systems SolaTheatre
- Twelve (12) ETC Source 4 Tungsten Series 2 - 14 degree
- Four (4) ETC Source 4 Lustr Series 2 - 14 degree
- Two (2) ETC Source 4 Lustr Series 2 - 10 degree
- Four (4) ETC Source 4 Lustr Series 2 - 26 degree

Onstage-

- Twelve (12) ETC Source 4 Lustr Series 2 - 26 degree
- Six (6) ETC Source 4 Lustr Series 2 - 36 degree
- Two (2) ETC Source 4 Lustr Series 2 - 50 degree
- Twenty (20) ETC ColorSource Par DB
- Seven (7) ETC ColorSource Linear 4 DB
- Three (3) Chauvet Strike 4
- Sixteen (16) Chauvet Rogue R2 Wash
- Nine (9) High End Systems Sola Spot 1000

All below equipment is shared across the venue and may not be available. Equipment cannot be used outside.

Fixtures

- Twenty-one (21) Chauvet Ovation E-260WW
- Eighteen (18) ETC ColorSource Par DB
- Seven (7) ETC ColorSource Linear 4 DB
- Thirty-Six (36) ETC Lustr Series 2
- Twelve (12) ETC Tungsten Series 2
- Twelve (12) ETC S4 Ellipsoidal 750W
- Seventeen (17) ETC S4 Par 750W
- Two (2) Clay Paky Stormy CC LED Strobe
- Three (3) Chauvet Rogue R2 Wash
- Four (4) High End Systems Sola Spot 1000

Lenses

- Three (3) 10° Lens
- Twelve (12) 14° Lens
- Thirty-Three (33) 19° Lens
- Fourteen (14) 26° Lens
- Thirteen (13) 36° Lens
- Five (5) 50° Lens
- Two (2) ETC Lustr 2 Fresnel Attachment
- Five (5) ETC S4 Par Very Narrow Lens
- Twenty-Seven (27) ETC S4 Par Narrow Lens
- Thirty-One (31) ETC S4 Par Medium Lens
- Twenty-Eight (28) ETC S4 Par Wide Lens
- Thirty-Three (33) ETC ColorSource PAR DB NR
- Sixty-Two (62) ETC ColorSource PAR DB MR
- Fifty-Four (54) ETC ColorSource PAR DB WR
- Seventy-Eight (78) ETC ColorSource PAR DB MO

Accessories

- Twenty-Six (26) 7.5" 4 Door Barndoor
- Twenty (20) 6.25" Donuts
- Three (3) 10" Donuts
- Twelve (12) 7.5" Tophat
- Twenty-Four (24) 6.25" Tophat
- Twelve (12) 7.5" Tophat
- Three (3) Drop-In Irises
- One Hundred and Twenty-Six (126) 6.25" Gel Frames
- Fifty-Three (53) 7.5" Gel Frames
- Ten (10) 10" Gel Frames
- One Hundred and Thirty-Four (134) B Size Gobo Frames
- Five (5) B Size Glass Gobo Frames
- Seven (7) Floor Mounts

Byers Theatre

Version: Sandy Springs Performing Arts Center

Drawing Name: Lighting Plan

Drawn By: Philip Way - Theatre Water Electrical

Date: May 28th, 2024

Scale: 1/4" = 1'-0"

SANDY SPRINGS PERFORMING ARTS CENTER

Byers Theatre Projection/Video

Projector

- One (1) Christie CP4220 4K DLP Cinema Projector (22,000 lumens)
 - *Setup for CINEMA Projection only. See Sources/Playback below.*

Screen

- One (1) Draper Stage screen 40' x 22' native screen flown on Lineset #4

Sources/Playback

- Internal Media Block (IMB) – For playing DCP Formatted Films

Backstage Video Feed

- Two PTZ cameras
 - One (1) on the Lower Balcony rail
 - One (1) on the Upper Balcony rail
- Can be routed to video screens located throughout the theatre.
- Routing includes dressing rooms, green room, stage crossover, stage manager station, and select lobby areas.
- *This feed is not independently patchable and cannot be used for recording purposes.*

Byers Theatre Orchestra Equipment

Orchestra Shell

- Wenger DIVA tower and ceiling system
- Eleven (11) @ 11' (nom) wide x 28' tall towers
- Three (3) @ 11' (nom) deep ceiling panels
 - Integrated lighting
- Towers include flip-down reflectors at 18' designed to bring some sound energy back to the orchestra.
- Largest effective usable area within the shell is approximately 50' wide x 36' deep from the plaster line.

Orchestra Chairs and Stands

- Ninety (90) Wenger Black Orchestra Chairs
- Ninety (90) Wenger Black Music Stands

Conductor

- One (1) Double-Wide Conductor's Music Stand
- One (1) Double-Step Conductor's Podium

Piano - PLEASE CONTACT PRODUCTION STAFF FOR AVAILABILITY AND COST.

- One (1) Steinway Concert Grand Model D (9')

Byers Theatre Stage Equipment

Stage Decking

- Four (4) 6' x 8' Wenger Stage Decks (available in customizable configuration)
- Four (4) 6' x 8' StageRight Fold Out Stage Decks
- Thirty-Three (33) 4' x 8' Stage decks (available in customizable configuration)

Lifts/Rigging - PLEASE CONTACT PRODUCTION STAFF FOR AVAILABILITY.

- One (1) Genie GS-3232, 32' Electric Scissor Lift (Drivable)
- One (1) Genie AWP-25s, 25' Electric Single Man Lift (Non-Drivable)
- One (1) Forklift (6000 lb Load Capacity)
 - House Staff Must Operate Forklift
- One (1) Half Ton Capstan Motorized Hoist

Sandy Springs Performing Arts Center – Studio Theatre

Seating and House Capacity:

- Retractable Seating Bleachers: 198 seats
- Other Seating Capacity: 192 Seats or 390 seats (without Seating Bleachers)
- Total: 390 seats

Stage Dimensions

- Overall Seating Area Dimension: 63'-9" D x 34'-0" W
- Overall Stage Area Dimensions: 20'-0" D x 66'-6" W
- Pipe Grid Height Over Stage: 21'-10"
- Pipe Grid Height Over Seating Area: 21'-8"

Stage Deck

- Area consists of a 3,690 square foot cushioned or sprung hardwood performance floor.
 - Used for both performances and seating.
- Portable stage consists of a StageRight All Purpose 4' x 8' Honeycomb Decks.
 - Black TechStage and gray carpet reversible surfaces.
- Room can accommodate a 48' x 20' stage or any variation up to 960 square feet, ranging in height from 18" - 24".

Drapery Schedule

- Main Drapery: Bipart, each panel 29'-6" W x 19'-6" H
Main drapery is a custom color 25 oz. IFR Velour at 75% fullness.
- Legs (tracked): 4 (2 sets) @ 15'-0" W x 19'-6" H
Legs are Black 25 oz. IFR velour sewn flat.
- Upstage Traveler: Bipart, each panel 27'-6" W x 19'-6" H
Traveler is Black, 25 oz. IFR Velour at 75% fullness.

Pipe Grid

- Pipe grids are located over the stage end, floor, and lobby.
 - Access is restricted to Genie Lift.
- Capacity: 30 pounds per linear foot, or 250 lb point load.
- Stage: 67'-10" W x 18'-1" D x 21'-10" H
- Floor: 57'-4" W x 40'-11" D x 21'-8" H
- Lobby: 37'-3" W x 18'-5" D x 20'-10" H

Company Switch *(Camlock with a reversed neutral and ground or bare wire)*

- Up Stage Right: One (1) 200A

Transformer-Isolated Power *(Camlock with a reversed neutral and ground or bare-wire)*

- Up Stage Right: One (1) 200A
- Down Stage Right: Two (2) 20A Edison Outlets
- Down Stage Left: Two (2) 20A Edison Outlets
- Back of House: One (1) 20A Edison Outlet
- Booth: Two (2) 20A Edison Outlets

Street

Loading/Unloading

Loading into the facility from the street level must be requested and approved, in writing, 30 days before the event date. If allowed, all loading/unloading must be done from an existing parking space. Double parking is not allowed.

Service Elevators

Service elevators are to be used for loading and unloading of any event items.

Studio Theatre Elevator size: 8'7"D x 4'10"W x 8'H

Studio Theatre Elevator Door: 3'11"W x 8'H

Backstage Areas

Dressing Rooms

- All support spaces are located at stage level to the Stage Right side of the stage.
- All dressing rooms have dedicated bathrooms and showers.

| | | |
|----------|------------------|---|
| Private: | Dressing Room A: | 4 |
| | Dressing Room B: | 6 |

Green Room

- Green room with a small kitchenette and private bathroom.
- Flexible "pre-function" area which can accommodate up to 20 people.

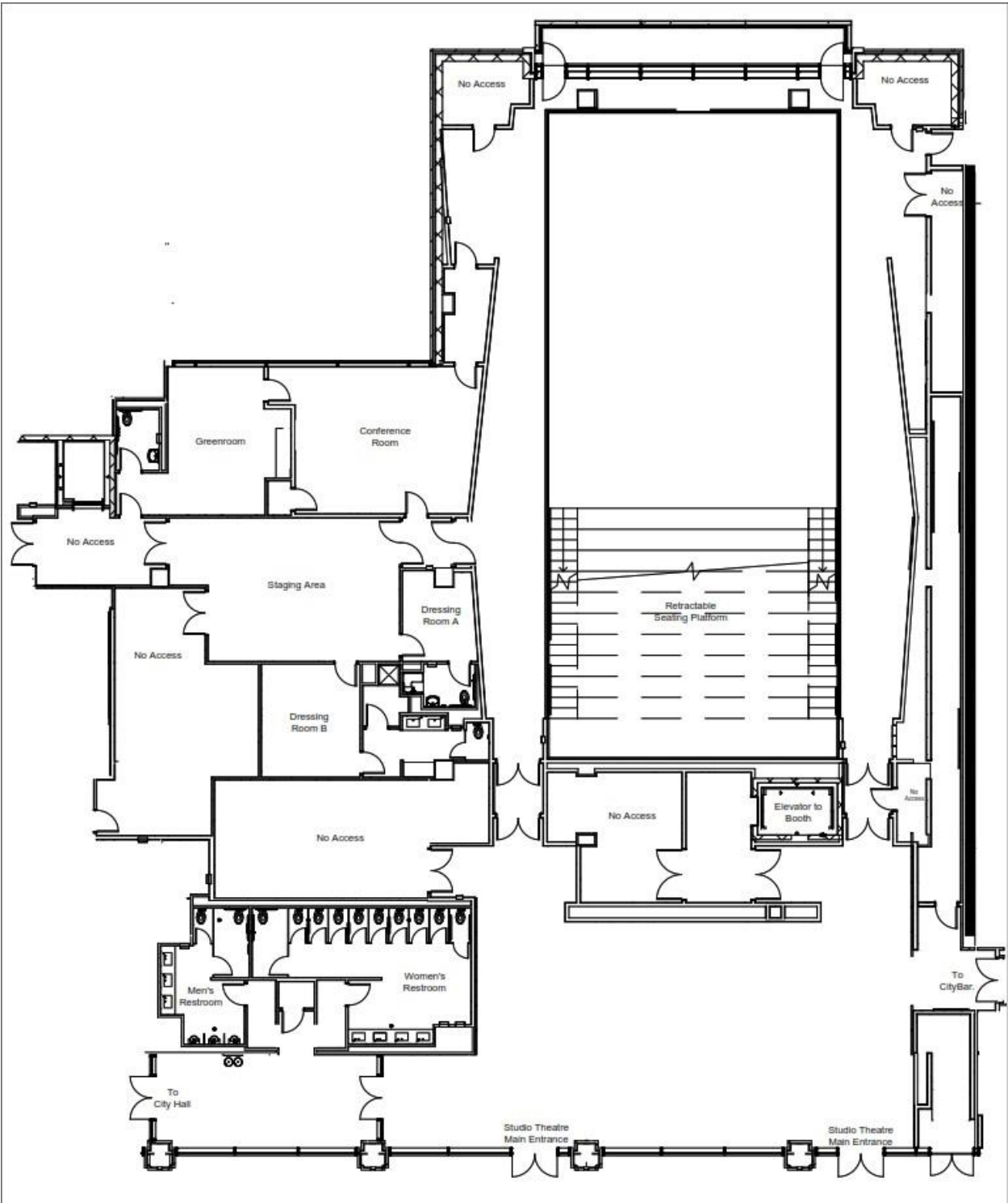
Conference Room

- Conference room with 10 seats (often used as an extension of the green room).

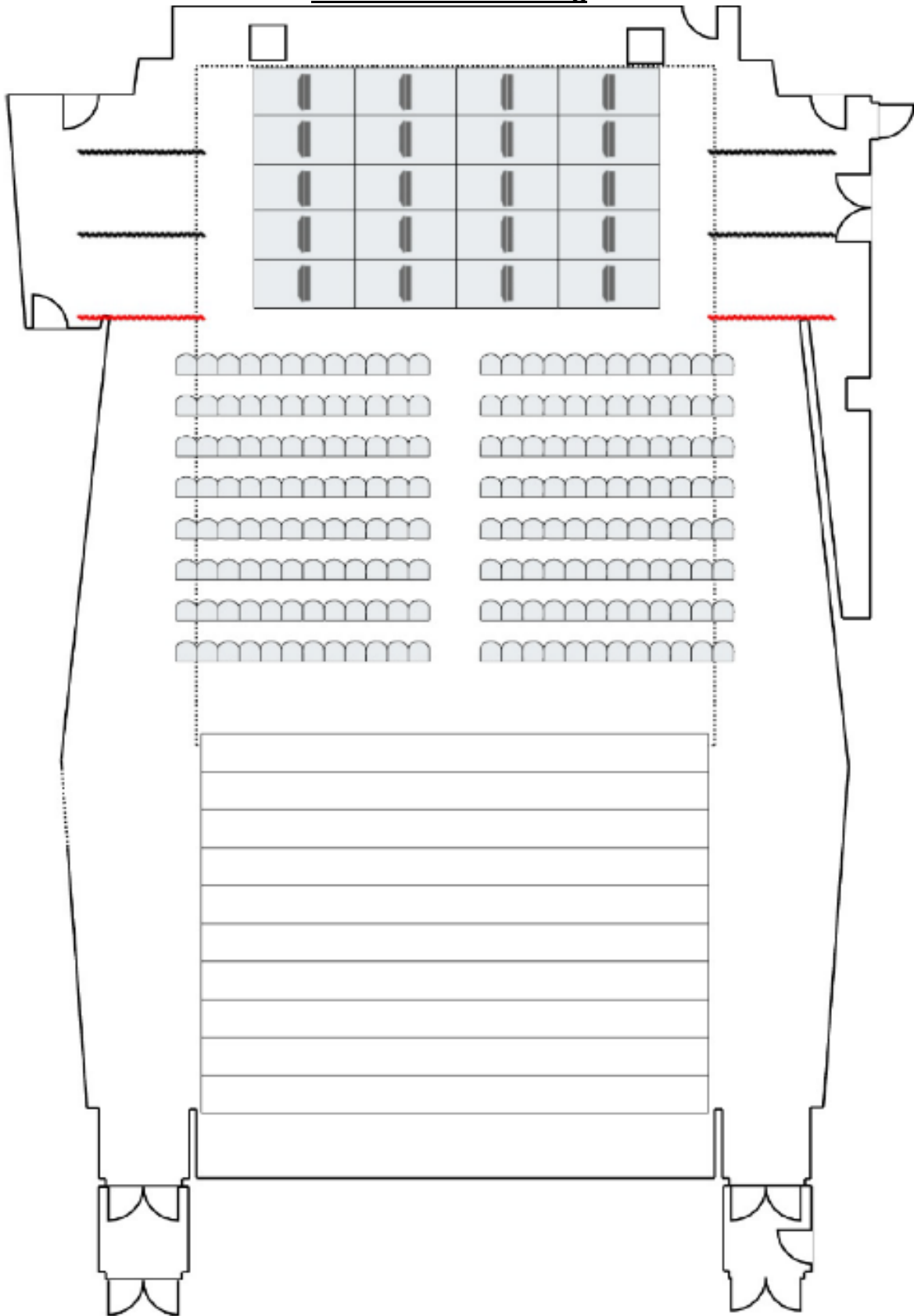
Handicap Access

- All backstage areas are accessible.

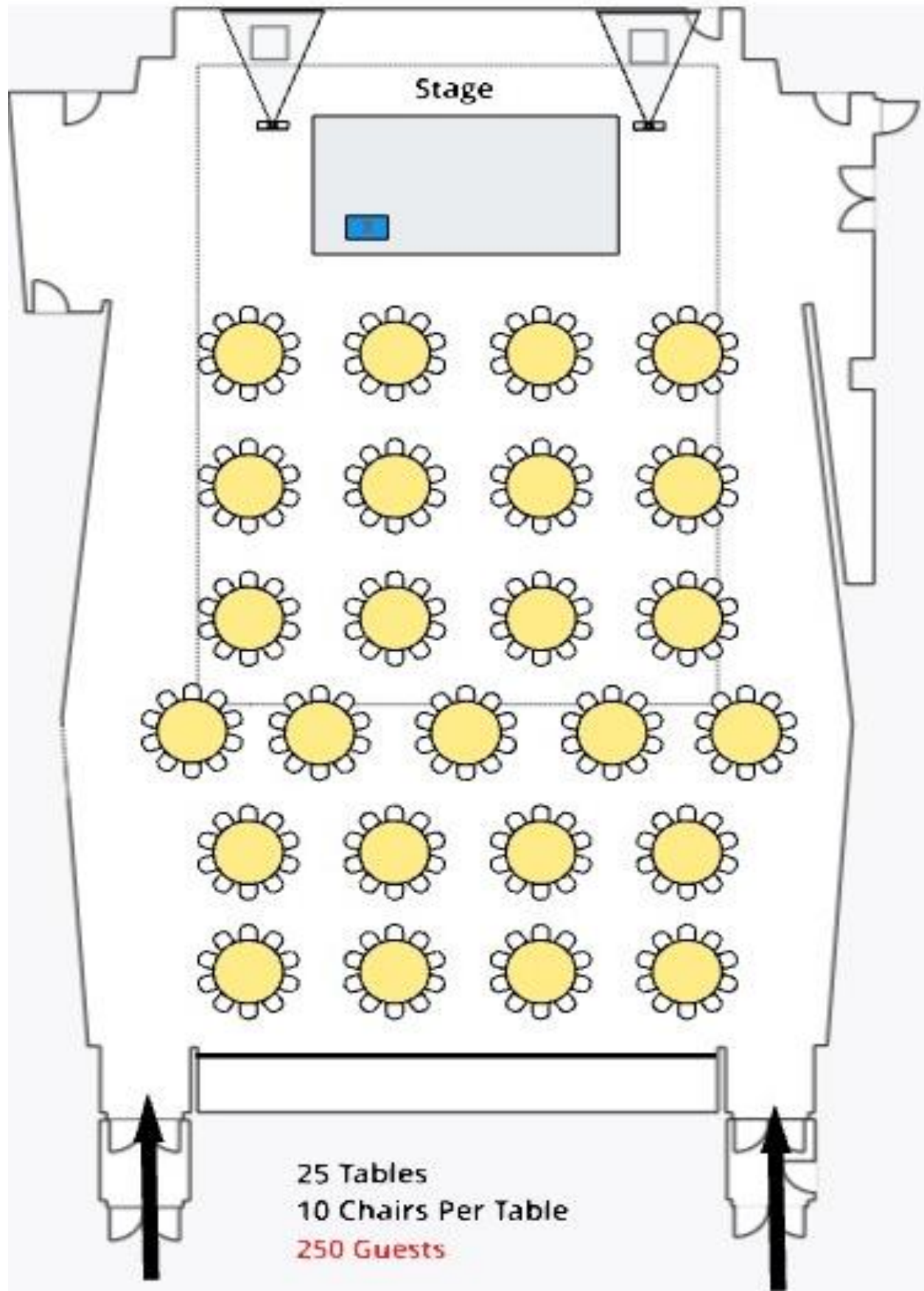
Studio Theatre



Studio Theatre Seating



Studio Theatre Dining



Studio Theatre Audio

Mix Position

- FOH mix position is in an enclosed booth.
 - Large, openable, windows facing the stage.
- One (1) 20A Edison outlet located in this position.

House Patches

- Equipped with cable patches throughout the building.
 - Includes XLR, W1, SDI, CAT5e, CAT6a, FIBER, and COM
- All cable patches lead to the booth where the master patch panel is located.
- Please contact the house audio engineer for more information regarding these patches.

Consoles

- Two (2) Digico S21 Mixing Console
 - One (1) for FOH
 - One (1) for Monitors/Backup

Input/Output

All Inputs and Outputs can be patched to various locations throughout the venue. Please contact the house audio engineer with patching.

- One (1) Digico D2 Rack configured with 48 inputs and 16 outputs.

Speakers and Personal Listening

Unless listed as removable, all speakers are permanent and cannot be removed or adjusted.

- Twelve (12) L-Acoustics KIVAii Line Array Cabinet
 - Hung 6L, 6R.
- Four (4) L-Acoustics SB18i-2 18" Subwoofer
 - Hung 2L, 2R.
- Twenty (20) Listen LR-5200 Personal Listening Receiver

Auxiliary Amps

All Auxiliary Amp channels can be patched to various locations throughout the venue. Please contact the audio manager with patching requests.

- Two (2) L-Acoustics LA4X quad channel amps

Backstage Monitors

- Backstage hallway, greenroom, and all dressing rooms are equipped with in-ceiling speakers.
 - Each room has individual volume controls.
- Speakers can be fed with the flown stage-mic or Left/Right feed from the audio console.
- Paging mic from Stage-manager console is also routed to these speakers.
 - This mic overrides stage feed.
- *The house DSP does all delay/zone processing.*
- *Please contact the house audio engineer for any customization or changes.*

Wireless Microphones

Limit of 4 total wireless in-house

- One (1) Shure ULXD4Q Quad-channel wireless receiver
- Four (4) Shure ULXD2 Handheld wireless transmitter (with Shure Beta 58 Capsule)
- Four (4) Shure ULXD1 Bodypack wireless transmitter
- Four (4) Shure MX150 Lapel Microphone (Black) for Bodypack
- Four (4) Countryman H6 Headset (tan) for Bodypack

Communication

- Six (6) Clearcom HKP-2X Dual-Channel Bodypack
- Two (2) Clearcom HS-6 Telephone Handset
- Six (6) Clearcom CC-300-X4 Single-Muff Headset
- Four (4) CC-400-X4 Double-Muff Headset

Using Outside Consoles

- The Studio Theatre audio system is designed for use with Digico S-Series consoles.
- Integrations of touring consoles is possible with advance notice.

All below equipment is shared across the venue and may not be available. Please contact the house audio engineer for availability.

Wired Microphones

- Four (4) AKG C414B/XLS Large Diaphragm Condenser Microphone
- Two (2) AKG C451B Small Diaphragm Condenser Microphone
- Four (4) AKG C535EB Condenser Microphone
- Four (4) Crown PCC160 Boundary Microphone
- One (1) Earthworks PM40 Piano Microphone System
- Two (2) EV RE20 Large Diaphragm Dynamic Microphone
- Two (2) pairs Neumann KM184 Small Diaphragm Condenser Microphone
- Two (2) Neumann TLM-103 Large Diaphragm Condenser Microphone
- Two (2) Royer R-121 Dynamic Ribbon Microphone
- Six (6) Sennheiser E604 Dynamic Clip-on Microphone
- Four (4) Sennheiser E609 Large Diaphragm Dynamic Microphone
- Four (4) Sennheiser MD-421-II Dynamic Microphone
- Two (2) Shure Beta 52 Dynamic Microphone
- Six (6) Shure Beta 58A Dynamic Microphone
- Two (2) Shure SM58/S Dynamic Microphone with Switch
- Six (6) Shure Beta 98AD/C Clip-on Dynamic Microphone
- Eight (8) Shure SM57 Dynamic Microphone
- Four (4) Shure SM81 Small Diaphragm Dynamic Microphone
- Seven (7) Shure MX418D/S Gooseneck Podium Microphone
- One (1) Shure 91A
- Six (6) Shure MX202B/S
- Two (2) Shure WB98H/C
- Three (3) SM58/S

Stands

- Forty (40) AKG KM210/9 Tripod Boom Stand
- Thirty (30) AKG KM259 Short Tripod Boom Stand
- Ten (10) Atlas Sound DS-7 8" Desk Stand
- Ten (10) Atlas Sound DS-2 4" Desk Stand

Direct Boxes and Interfaces

- Six (6) Countryman Type 85 Active Direct Box
- Six (6) Radial JDI Passive Direct Box
- Four (4) Radial PRO-AV2 Stereo Direct Box
- Two (2) Focusrite Scarlett 6i6 USB Interface
-

Additional Monitors

- Twenty-Two (22) L-Acoustics X12 Passive Floor Monitor Wedge
- Six (6) L-Acoustics 112P Active Floor Monitor Wedge
- Two (2) L-Acoustics SB15P Active Subwoofer

Studio Theatre Lighting

Dimmers

- The Studio Theatre maintains one (1) ETC Sensor 3 x 96 rack.
 - 66 dimmers (*ETC ThruPower modules*)

Console

- Master Console (Booth): ETC ION (24,576 output)
 - One (1) 21" External Touchscreen
 - One (1) 24" External Monitor
- Roving Console (Stage): ETC Puck
 - One (1) 21" External Touchscreen (*Dependent on availability*)

House Lights

- Controlled through ETC Paradigm with integrated HTP (Highest Takes Priority) control with lighting console.
- All house lights are LED and permanently hung/mounted in the venue.

House Spotlights

- One (1) Robert Juliat Roxie 300w LED

Rep Plot

Lobby-

- Eight (8) ETC ColorSource Par DB
- One (1) Chauvet Ovation E-260 WW IP - 26 degree
- Two (2) Chauvet Ovation E-260 WW IP - 36 degree
- Two (2) Chauvet Rogue R2 Wash

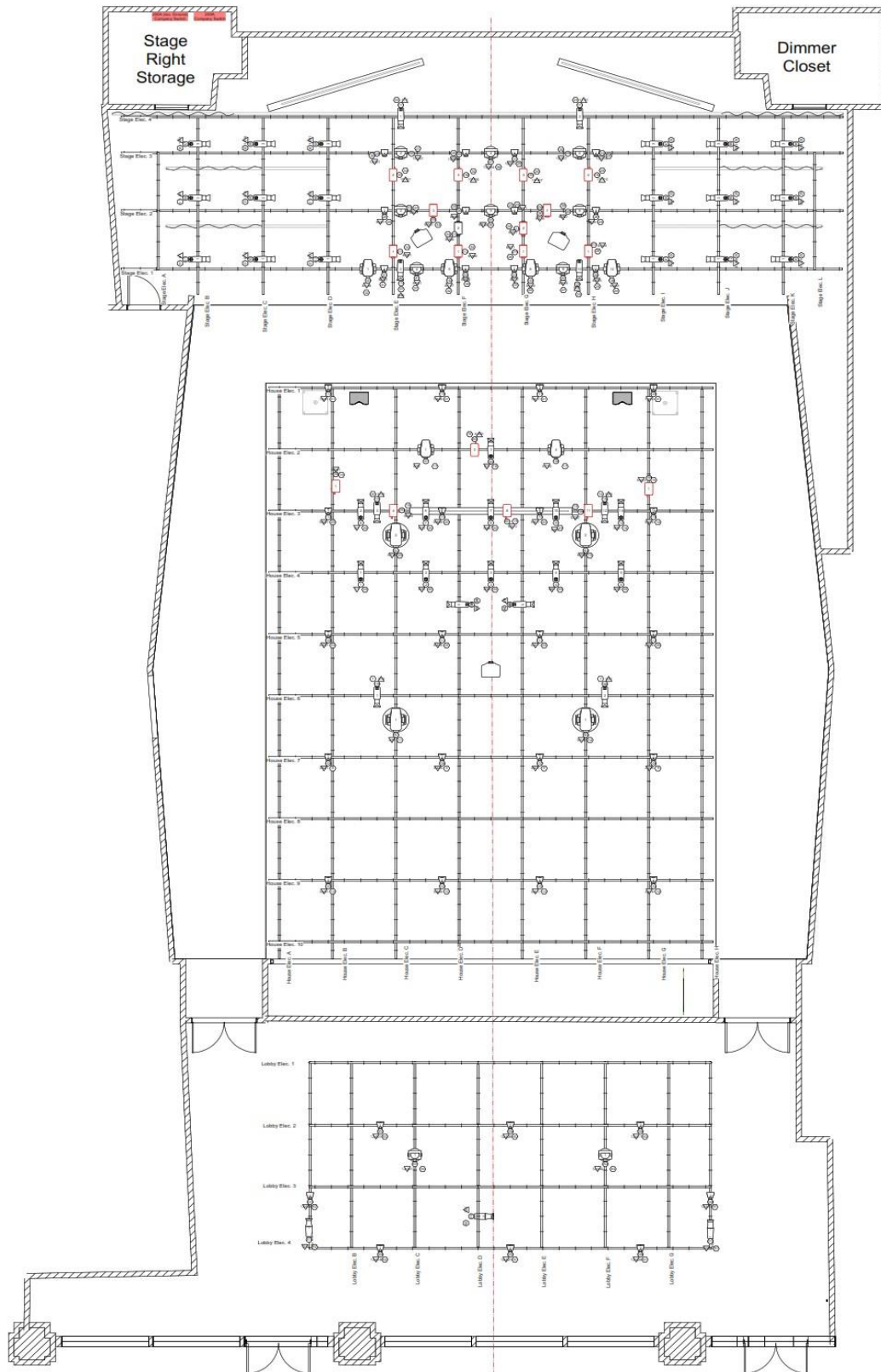
FOH-

- Eleven (11) ETC Source 4 Lustr Series 2 - 19 degree
- Six (6) ETC Source 4 Lustr Series 2 - 50 degree
- Twenty (20) ETC ColorSource Par DB
- Six (6) Chauvet Ovation F-95
- Eight (8) Chauvet Ovation F-265 WW
- Four (4) High End Systems SolaTheatre
- Two (2) High End Systems Sola Spot 1000

Onstage-

- Eighteen (18) ETC Source 4 Lustr Series 2 - 36 degree
- Four (4) ETC Source 4 Lustr Series 2 - 50 degree
- Twelve (12) ETC ColorSource Par DB
- Four (4) Chauvet Ovation F-95
- Eight (8) Chauvet Ovation F-265 WW
- Eight (8) Chauvet Rogue R2 Wash
- Four (4) High End Systems Sola Spot 1000

Studio Theatre Light Plot



All below equipment is shared across the venue and may not be available. Equipment cannot be used outside.

Fixtures

- Twenty-one (21) Chauvet Ovation E-260WW
- Eighteen (18) ETC ColorSource Par DB
- Seven (7) ETC ColorSource Linear 4 DB
- Thirty-Six (36) ETC Lustr Series 2
- Twelve (12) ETC Tungsten Series 2
- Twelve (12) ETC S4 Ellipsoidal 750W
- Seventeen (17) ETC S4 Par 750W
- Two (2) Clay Paky Stormy CC LED Strobe
- Three (3) Chauvet Strike 4
- Three (3) Chauvet Rogue R2 Wash
- Four (4) High End Systems Sola Spot 1000

Lenses

- Three (3) 10° Lens
- Twelve (12) 14° Lens
- Thirty-Three (33) 19° Lens
- Fourteen (14) 26° Lens
- Thirteen (13) 36° Lens
- Five (5) 50° Lens
- Two (2) ETC Lustr 2 Fresnel Attachment
- Five (5) ETC S4 Par Very Narrow Lens
- Twenty-Seven (27) ETC S4 Par Narrow Lens
- Thirty-One (31) ETC S4 Par Medium Lens
- Twenty-Eight (28) ETC S4 Par Wide Lens
- Thirty-Three (33) ETC ColorSource PAR DB NR
- Sixty-Two (62) ETC ColorSource PAR DB MR
- Fifty-Four (54) ETC ColorSource PAR DB WR
- Seventy-Eight (78) ETC ColorSource PAR DB MO

Accessories

- Twenty-Six (26) 7.5" 4 Door Barndoor
- Twenty (20) 6.25" Donuts
- Three (3) 10" Donuts
- Twelve (12) 7.5" Tophat
- Twenty-Four (24) 6.25" Tophat
- Twelve (12) 7.5" Tophat
- Three (3) Drop-In Irises
- One Hundred and Twenty-Six (126) 6.25" Gel Frames
- Fifty-Three (53) 7.5" Gel Frames
- Ten (10) 10" Gel Frames
- One Hundred and Thirty-Four (134) B Size Gobo Frames
- Five (5) B Size Glass Gobo Frames
- Seven (7) Floor Mounts

Studio Theatre Projection/Video

Projector

- Three (3) Epson G7400U 4K, 1080P projectors.
 - Two are located upstage left and right.
 - One is in the center of the house.

Screen

- Three (3) Screens.
 - Two are located upstage left and right.
 - One is in the center of the house.

Sources/Playback

- HDMI Only (Client must provide video playback device)

****Projection system is independent of the theatrical system. Inputs to the projectors are only located along the walls in the house and stage area. There is NO feed to the projectors from the booth. Use of this video system may require an additional operator, contact production staff for more information. ****

Video Wall

- The Studio Theatre Lobby is equipped with an 11' x 20' video wall.
- Sources: HDMI

Backstage Video Feed

- Equipped with a PTZ camera.
 - Located in the back of the house.
- Can be routed to video screens located throughout the theatre, including dressing rooms, green room, stage manager station, and lobby video wall.
- *This feed is not independently patchable and cannot be used for recording purposes.*

Byers Theatre Stage Equipment

Stage Decking

- Four (4) 6' x 8' Wenger Stage Decks (available in customizable configuration)
- Four (4) 6' x 8' StageRight Fold Out Stage Decks
- Thirty-Three (33) 4' x 8' Stage decks (available in customizable configuration)

Lifts/Rigging - PLEASE CONTACT PRODUCTION STAFF FOR AVAILABILITY.

- One (1) Genie GS-3232, 32' Electric Scissor Lift (Drivable)
- One (1) Genie AWP-25s, 25' Electric Single Man Lift (Non-Drivable)
- One (1) Forklift (6000 lb Load Capacity)
 - House Staff Must Operate Forklift
- One (1) Half Ton Capstan Motorized Hoist

Pianos - PLEASE CONTACT PRODUCTION STAFF FOR AVAILABILITY AND COST

- One (1) Steinway Boston Player Grand Piano. (6'4")
- One (1) Boston Upright Piano.